

EDBM and CCSA Licencing Procedure

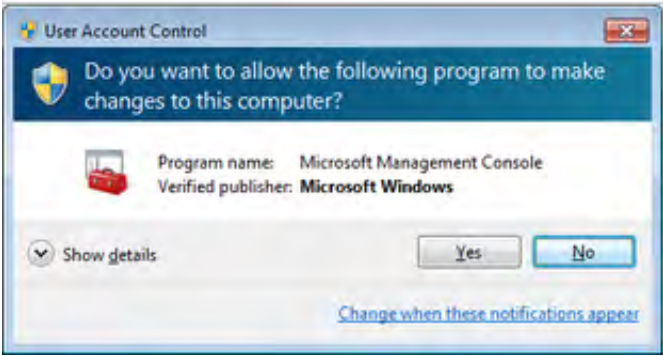
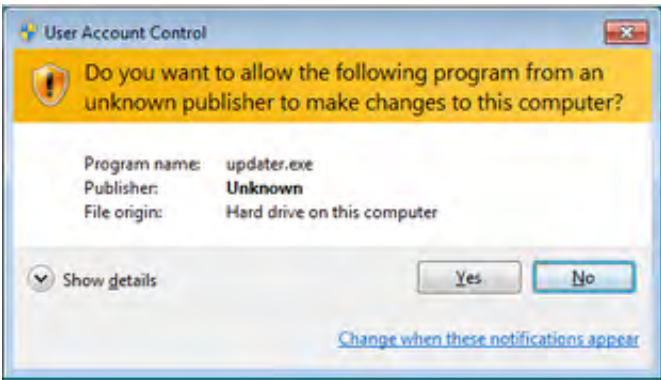
Introduction

On opening the CCSA or eDBM your will be shown the licence screen.

On this screen you will need to enter the details you received by email exactly. The case must be the same and all fields consistent with the information received.

You may then select to Unlock instantly online (requires internet), or to unlock via email (only email required).

NOTE: If at ANY point during the licencing process a window titled User Account Control requests permission be sure to select YES or CONTINUE. This is to allow the eDBM/CCSA program access to update the files needed to licence.



Installation

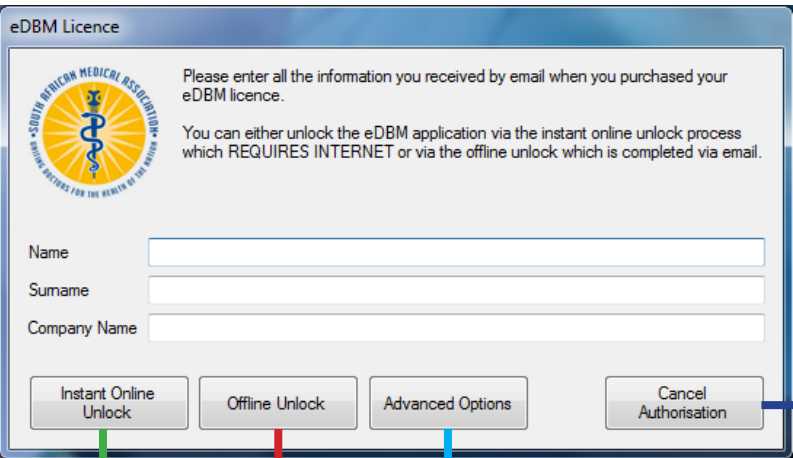
During the installation you may be prompted to install Microsoft.NET 4 automatically, this is required to run the eDBM and many other modern Windows applications. If you already have the required files installed you will not be asked to install .NET

If the installation fails

If the installation of .NET 4 fails with an unknown error (especially under Windows XP) please try installing the following 'hotfix' patch from Microsoft.

The URL is: http://download.microsoft.com/download/f/f/1/ff178bb1-da91-48ed-89e5-478a99387d4f/wic_x86_enu.exe

The file is also available from the SAMA downloads section at http://www.samedical.org/downloads/wic_x86_enu.exe



Cancel Authorisation
This will cancel the authorisation process and exit the licence procedure.
You will need to repeat this process to licence your software.

Instant Online Unlock

This will connect to the SAMA licencing server to confirm your details are valid. You must be online and connected to the internet to make use of the instant offline unlock.

If they are valid you will receive a confirmation message and your software will be licenced.

Offline Unlock

Use the offline unlock if you are not connected to the internet and would like to receive an unlock code to licence your software.

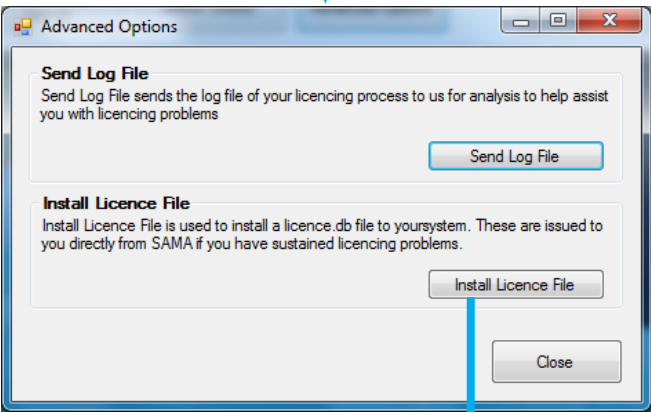
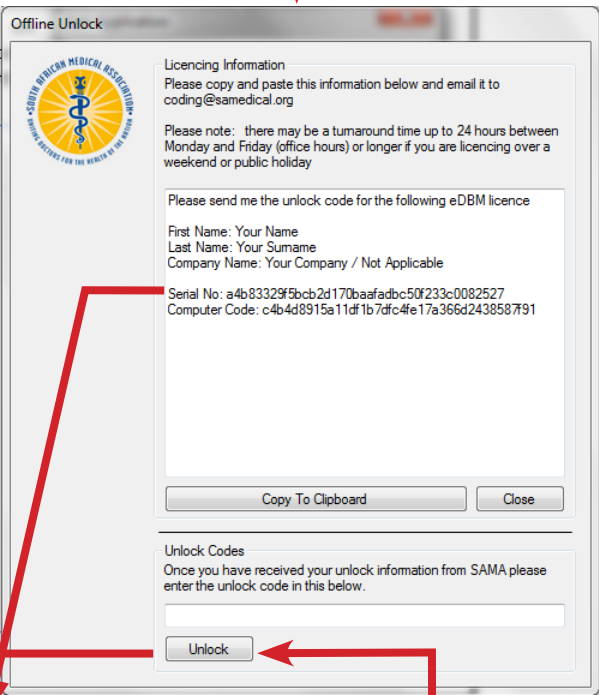
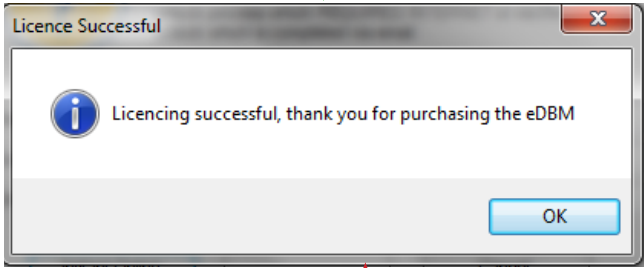
NB. The offline unlock information *must* be generated on the computer where the licence will be used as it is linked to the actual PC it is installed on.

Advanced Options

If you are unable to licence your eDBM, in the advanced options you can send a log file to SAMA which contains all the details about your licencing process for assistance.

Install Licence File

If you are sent a licence.db file from SAMA, please use the install licence file option to install the file.



Copy the information in this display and email it to **coding@samedical.org**

You will be sent unlock code from SAMA, this code should be copied and pasted into the unlock code field. Make sure it has no spaces at the beginning or end of the code.

Click the Unlock button to apply the licence.